

WASTE & RECYCLING GUIDE TOWN OF CLAREMONT

JULY 2023						
S	M	T	W	T	F	S
30	31					1
2	3	4	5	6	7	8
9	10	11	12	13	14	15
16	17	18	19	20	21	22
23	24	25	26	27	28	29

AUGUST 2023						
S	M	T	W	T	F	S
		1	2	3	4	5
6	7	8	9	10	11	12
13	14	15	16	17	18	19
20	21	22	23	24	25	26
27	28	29	30	31		

SEPTEMBER 2023						
S	M	T	W	T	F	S
					1	2
3	4	5	6	7	8	9
10	11	12	13	14	15	16
17	18	19	20	21	22	23
24	25	26	27	28	29	30

OCTOBER 2023						
S	M	T	W	T	F	S
1	2	3	4	5	6	7
8	9	10	11	12	13	14
15	16	17	18	19	20	21
22	23	24	25	26	27	28
29	30	31				

NOVEMBER 2023						
S	M	T	W	T	F	S
			1	2	3	4
5	6	7	8	9	10	11
12	13	14	15	16	17	18
19	20	21	22	23	24	25
26	27	28	29	30		

DECEMBER 2023						
S	M	T	W	T	F	S
31					1	2
3	4	5	6	7	8	9
10	11	12	13	14	15	16
17	18	19	20	21	22	23
24	25	26	27	28	29	30

JANUARY 2024						
S	M	T	W	T	F	S
	1	2	3	4	5	6
7	8	9	10	11	12	13
14	15	16	17	18	19	20
21	22	23	24	25	26	27
28	29	30	31			


FEBRUARY 2024						
S	M	T	W	T	F	S
				1	2	3
4	5	6	7	8	9	10
11	12	13	14	15	16	17
18	19	20	21	22	23	24
25	26	27	28	29		

MARCH 2024						
S	M	T	W	T	F	S
31					1	2
3	4	5	6	7	8	9
10	11	12	13	14	15	16
17	18	19	20	21	22	23
24	25	26	27	28	29	30

APRIL 2024						
S	M	T	W	T	F	S
	1	2	3	4	5	6
7	8	9	10	11	12	13
14	15	16	17	18	19	20
21	22	23	24	25	26	27
28	29	30				

MAY 2024						
S	M	T	W	T	F	S
			1	2	3	4
5	6	7	8	9	10	11
12	13	14	15	16	17	18
19	20	21	22	23	24	25
26	27	28	29	30	31	

JUNE 2024						
S	M	T	W	T	F	S
30						1
2	3	4	5	6	7	8
9	10	11	12	13	14	15
16	17	18	19	20	21	22
23	24	25	26	27	28	29

 **Good Friday** – No collection. Bins will be collected Saturday 30 March 2024.
Christmas Day (Monday) and **New Year's Day (Monday)** – No collection.
 All bin collections in these weeks will be moved back by one day.

YELLOW WEEK



**Recycling and
General Waste**
bins collected

GREEN WEEK



**Garden Organics
and General Waste**
bins collected

See Yellow and Green Week dates and Zone Map on page 3 for what bins to put out on your designated collection day.

BULK WASTE PASS

CLAREMONT RESIDENTS

 West Metro Recycling Centre



Valid to
31 July 2024

Further information overleaf

GREEN WASTE PASS

CLAREMONT RESIDENTS

 West Metro Recycling Centre



Valid to
31 July 2024

Further information overleaf



BULK WASTE PASS

CLAREMONT RESIDENTS

♻️ West Metro Recycling Centre

VALID FOR ONE CUBIC METRE

For more information visit:
wmrc.wa.gov.au

GREEN WASTE PASS

CLAREMONT RESIDENTS

♻️ West Metro Recycling Centre

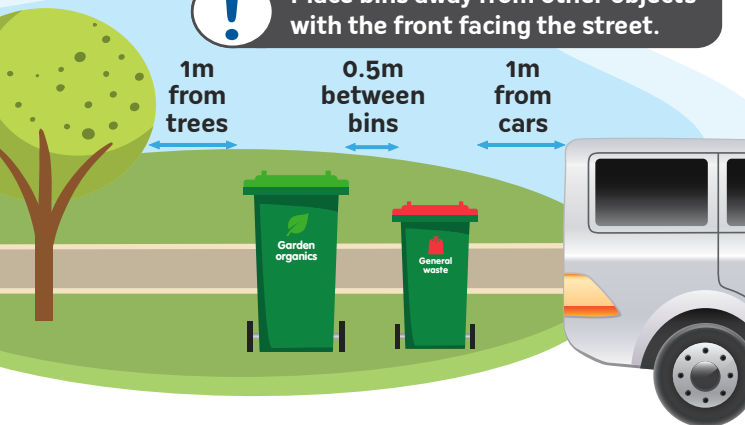
VALID FOR ONE CUBIC METRE

For more information visit:
wmrc.wa.gov.au

Bin Collection Information



Place bins away from other objects with the front facing the street.



Ensure bins are placed out by 6.00am on collection day



Bins must weigh less than 70kg to be collected



Ensure lids are firmly closed so items do not spill out and do not overfill your bins.

Contact

Waste Query

Phone number

Veolia

Missed bin collection enquiries

1300 633 633

Claremont

Report a damaged bin
Request a change to your bin services

9285 4300 or
toc@claremont.wa.gov.au

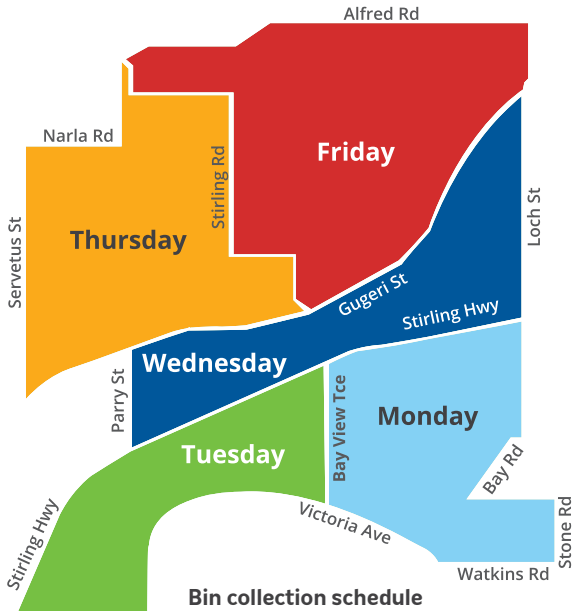
WMRC

General waste and recycling enquiries

08 9384 6711

Bin Collection Day

Please see front calendar for your yellow and green week dates and refer to the zone map below for what day of the week your bins will be collected.



Recycling
Fortnightly



Garden Organics
Fortnightly



General Waste
Weekly

Which Bin Do I Put It In?

Garden Organics – Collected fortnightly



Your **Garden Organics Bin** is for:

- ✓ Grass clippings
- ✓ Palm fronds
- ✓ Prunings, cuttings & trimmings
- ✓ Tree nuts
- ✓ Twigs & sticks

Your **Garden Organics Bin** is NOT for:

- ✗ Food waste
- ✗ Cardboard
- ✗ Construction & demolition waste
- ✗ Dog poo or kitty litter
- ✗ General waste
- ✗ Hazardous waste
- ✗ Plastic bags or liners
- ✗ Recyclables
- ✗ Sand & soil

These items don't belong in the GO bin:



NO food waste



NO cardboard



NO dog poo or kitty litter



NO general waste



NO construction & demolition waste



NO hazardous waste



NO plastic bags or liners



NO recyclables (plastics, glass & metals)

Recycling Bin – Collected fortnightly



360L recycling bins available on request (FEES APPLY)

Your **Recycling Bin** is for:

- ✓ Clean paper & cardboard
- ✓ Glass bottles & jars
- ✓ Plastic bottles & containers
- ✓ Steel & aluminium cans

Your **Recycling Bin** is NOT for:

- ✗ Recycling in bags
- ✗ Soft plastics
- ✗ Aerosols
- ✗ Batteries or E-Waste
- ✗ Meat trays
- ✗ Nappies
- ✗ Textiles



Please ensure all recycling is rinsed, empty, with all lids removed and placed loose in the bin, not in bags.

General Waste Bin – Collected weekly



Your **General Waste Bin** is for:

- ✓ Dog poo & kitty litter
- ✓ Food waste
- ✓ General rubbish items
- ✓ Hygiene products
- ✓ Nappies
- ✓ Polystyrene
- ✓ Plastic bags
- ✓ Soft plastics

Your **General Waste Bin** is NOT for:

- ✗ Clean recyclables
- ✗ Hazardous waste

Household Hazardous Waste and E-waste CAN NOT go in any household bins. Drop these waste items off to the West Metro Recycling Centre free of charge, or visit wmrc.wa.gov.au/recycling-disposal/west-metro-recycling-centre/accepted-items-free-for-a-fee/ for more information.

WHICH BIN DO I PUT IT IN?

Plastics

Many types of plastic packaging and plastic products cannot be recycled in your yellow-lidded recycling bin. Here is what's happening in WA (and what you can do) to address the growing problem of plastics.

Plan for Plastics

The WA State Government launched the Plan for Plastics in 2022 to introduce regulations around common single-use plastic items. Replacing single-use plastic items with disposable items made from bamboo, paper or similar materials is a great start, but the best option is to eliminate single-use altogether and choose reusables instead.

Stage 1 items that have already been phased out:

- Cutlery
- Drink stirrers
- Drinking straws
- Expanded polystyrene take away food containers
- Helium balloon releases
- Plates
- Thick plastic shopping bags
- Unlidded bowls
- Unlidded cups for cold beverages
- Unlidded take away food containers

Stage 2 items:

Banned on 1 September 2023

- Loose/unmoulded polystyrene packaging
- Expanded polystyrene cups and meat/seafood trays
- Degradable plastics
- Cotton buds with plastic stems
- Microbeads

Banned on 1 March 2024

- Produce bags
- Coffee cups and lids
- Trays for takeaway food not covered in stage 1 ban

Banned on 1 September 2024

- Lids for cups, trays, bowls, plates, and takeaway food containers

Together, 100+ million people are creating a world without plastic waste



Plastic Free July

You can be part of the solution to reduce plastic pollution! Plastic Free July is a global movement that provides free resources, tips, and challenges to help individuals, organisations, businesses, and schools reduce their single-use plastic use. And it was started right here in Perth by Rebecca Prince-Ruiz of the Western Metropolitan Regional Council. Get involved today at plasticfreejuly.org.

Containers for Change



Whether you're keen to earn a bit of extra cash, raise money for your local sports club or event, or donate to your favourite charity, you can earn or donate 10 cents for every eligible drink container collected.

All drink containers and lids returned through the scheme are recycled into new items. Lids must be separated and placed in separate collection bins on return. Find out more information at: containersforchange.com.au/wa/containers-reinvented

Acceptable beverage containers include most aluminium, glass, plastic, steel and liquid paperboard containers between 150ml and 3 litres. All lids must be removed from containers.

Local return depots:

Paraquod Industries Depot

4-6 Orton Rd, Shenton Park

Container Refunder – Claremont Showgrounds

Ashton Crescent (inside Gate 8)

For more information and other locations to return to visit:

containersforchange.com.au/wa

Remember to rinse and take the lids off!

ELIGIBLE CONTAINERS



Most glass, plastic, aluminium, steel and paper-based cartons between 150mL and 3L

INELIGIBLE CONTAINERS

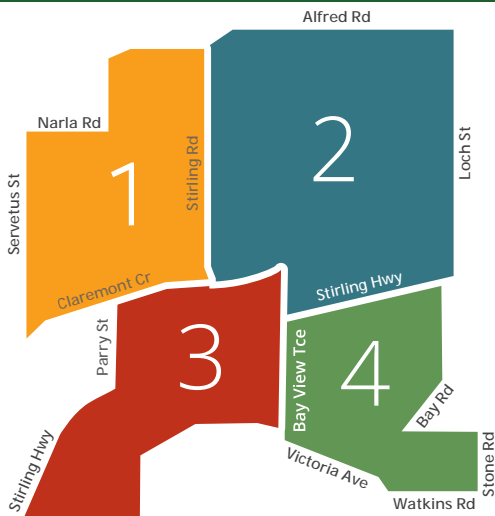


Containers not commonly found in litter, including all plain milk, flavoured milks 1L and above, pure juice drinks, wine and spirit bottles, cordials.

PLASTICS

CONTAINERS FOR CHANGE

Green Waste & Bulk Waste Collection



Bulk and Green Waste need to be placed on the verge on the weekend before your zone's scheduled collection date.

 Bulk Waste Collection x 2

 Green Waste Verge Collection x 2

AREA 1 Removed week beginning:

24 Jul 2023

02 Oct 2023

29 Jan 2024

01 Apr 2024

AREA 2 Removed week beginning:

31 July 2023

09 Oct 2023

05 Feb 2024

08 Apr 2024

AREA 3 Removed week beginning:

07 Aug 2023

16 Oct 2023

12 Feb 2024

15 Apr 2024

AREA 4 Removed week beginning:

14 Aug 2023

23 Oct 2023

19 Feb 2024

22 Apr 2024

Bulk waste is collected by multiple trucks. It's important that you **DO NOT** place out additional waste once part of your waste has been collected as the truck that collects that type of waste has already been.

GREEN WASTE COLLECTIONS

Up to one cubic metre of the following items

WILL be collected:

- ✓ Bag leaves and small vegetation
- ✓ Garden organics – branches, cuttings and leaves
(Max length 1.5 metres & max diameter 150mm)



Green waste bags – for small cuttings can be purchased from the Town's Administration building for \$5.50 each

The following Items **WILL NOT** be collected:

- ✗ Branches over 1.5 metres in length
- ✗ Branches over 200mm in diameter
- ✗ Bulk or household waste
- ✗ Leaves in plastic bags
- ✗ Large tree trunks or stumps

BULK WASTE COLLECTIONS

The following items **WILL** be collected:

- ✓ General junk. Items longer than 1.2 meters in length need to be dismantled e.g. swings, playgrounds, trampolines
- ✓ Old furniture
- ✓ Refrigerators (doors removed) & other white goods
- ✓ Stoves (doors removed)



The following items **WILL NOT** be collected:

- | | |
|---|--|
| ✗ Asbestos & cement product* | ✗ Foodstuffs
(household food waste) |
| ✗ Bricks, tiles, concrete, sand & rubble* | ✗ Gas bottles** |
| ✗ Building materials & timber* | ✗ Green waste* |
| ✗ Car batteries** | ✗ Mattresses* |
| ✗ Electronics such as computers, TVs & printers** | ✗ Motor vehicles
(whole or parts)* |
| ✗ Flammable liquids & oil** | ✗ Paint & chemicals** |

Items above can be dropped at the West Metro Recycling Centre. Items with a * for a fee and items with ** free of charge (with proof of residency).

West Metro Recycling Centre

The West Metro Recycling Centre offers safe disposal and recycling of a range of items not suitable for kerbside collection.

FOR A FEE:



Asbestos



Bulk Household Waste



Construction & Demolition Waste



Greenwaste



Mattresses



Refrigerated appliances



Tyres

FREE:

Household Hazardous Waste (HHW)

HHW can not go in any household bin. HHW includes unwanted household products that contain harmful chemicals, are flammable, corrosive or explosive. Take them to the West Metro Recycling Centre free of charge. Limits of up to 20kg or 20L per material type, per person, per day.



Acids and alkalis



Aerosols and sprays cans



Batteries



Engine coolants



Fire extinguishers (red only)



Flares



Gas cylinders



Household cleaners



Household light globes and fluorescent tubes



Paint



Pesticides/herbicides



Pool chemicals



Smoke detectors



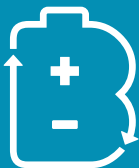
Unknown chemicals



Waste motor oil



This project is supported by the Government of Western Australia and administered by the Waste Authority.



B-cycle
Battery
Recycling

B-Cycle

Batteries should never go into any of your household bins. Instead, give them another life with B-Cycle, Australia's national battery recycling scheme. Many major retailers are now offering B-Cycle collection points – check bcycle.com.au to find a location close to you.

Free Community Recycling

As a resident of a WMRC member council you can drop off domestic quantities of the following items for free. Proof of residence required.



Batteries



Bicycles



Car batteries



Cardboard



Clothing & shoes



Cooking oil (max 20L)



Corks



Domestic recyclables



E-Waste



Mobile phones



Petrol



Plastic plant pots



Polystyrene



Plastic beer clips



Plastic bottle tops



Printer cartridges



Scrap metal



Sports goods



Stationery - home or office



Towels & Sheets



Waste motor oil (max 20L)



X-rays

FREE MULCH is available for Town of Claremont residents from the West Metro Recycling Centre year-round. No limit on how much you can take, just bring proof of residence and be ready to load it yourself.



West Metro Recycling Centre Opening Hours

OPEN 7 DAYS TILL 4PM

Monday – Friday: 7.30am to 4.00pm

Saturday & Sunday: 8.00am to 4.00pm

Public Holidays: 7.30am to 2.00pm

(Closed Christmas Day, Good Friday & New Year's Day)

wmrc.wa.gov.au

Recycling Hotline: **9384 6711**



How To Be A GREAT Sort

Sort first and treat your general waste bin as a last resort.

G = GIFT

Gift items to charity, swap or sell.

R = RECYCLE

Recycle these 5 in your yellow lidded bin – paper, cans, cardboard, plastic and glass - rinsed, loose, lids off.



E = EARTHCYCLE

Compost food scraps and garden waste. Worm Farming and Composting Factsheets available at wmrc.wa.gov.au

A = AVOID

Avoid single-use items and excess packaging. Find out how at a WMRC low-waste workshop.

T = TAKE

Take hazardous and E-waste items to drop-off points. The West Metro Recycling Centre is a registered drop off point for the Household Hazardous Waste Program.



WasteSorted

A Waste Authority Program

Visit wastesorted.wa.gov.au for more information about being a GREAT sort.

Reuse and Repair

If it's too good to throw away, gift, swap, sell or fix it.

Buy Nothing or Gifting With Integrity	Post anything in your local Facebook community group for free
Charities	Donate clothing, bric-a-brac & furniture
Dismantle or Bicycles for Humanity	Donate bikes
FairGame	Donate sporting equipment
Garage Sale Trail	Register to hold a garage sale or host your own throughout the year
GiveWrite	Donate new/lightly used stationery
Givit	Match item to recipient
Gumtree	Sell or free-list any item
Hello Initiative or Mobile Muster	Donate mobile phones
Repair Labs/Cafés	Learn to fix broken items

Furniture Home Collection Services

If your household furniture is in good, clean condition, you can donate it to charity. See the pick up services below:

Organisation	Phone
Anglicare Home Collection Service	6253 3535
Good Sammy Home Collection	1300 466 372
Paraquad Industries	9381 0189
People Who Care	9379 1944
Salvation Army Home Collection Service	13 72 58
St Vincent de Paul Society	6323 7520

Want to reduce your waste?

The WMRC can help you trim your bin and live a low-waste life!

- ✓ Attend a low-waste workshop
- ✓ Invite WMRC to present a waste talk to your organisation or community group
- ✓ Become a WMRC Volunteer
- ✓ Follow us on social media for the latest low-waste news, tips, and events
- ✓ Subscribe to our monthly newsletter

Find out more at
wmrc.wa.gov.au



**Western
Metropolitan**
Regional Council

Recycling & Disposal Guide: A-Z

For a more comprehensive list visit recycleright.wa.gov.au or download the Recycle Right app through the app store.

Key

- | | |
|---|---|
| 1 | Yellow-lidded Recycling bin items |
| 2 | Lime green-lidded Garden Organics bin items |
| 3 | Red-lidded General Waste bin items |
| 4 | Take to West Metro Recycling Centre |
| 5 | Bulk Waste Collections |
| 6 | Green Waste Collections |
| 7 | Donate to charity |

A

- | | |
|---|------------------------|
| 4 | Acids (HHW) |
| 4 | Aerosol cans (HHW) |
| 1 | Aluminium cans |
| 1 | Aluminium foil (clean) |

B

- | | |
|-----|--------------------------------|
| 4 | Batteries (HHW) |
| 7 | Blankets |
| 4 | Bleaches (HHW) |
| 3 | Blister packs |
| 1 | Bottles (tops/lids off) |
| 3 | Bread bags (plastic) |
| 4 | Bricks (C&D) |
| 1 | Broken Glass |
| 4 | Building materials/waste (C&D) |
| 4/5 | Bulky items |
| 1 | Butter tubs (rinsed) |

C

- | | |
|---|---------------------------------|
| 1 | Cardboard (boxes & other types) |
| 3 | Cassette tapes (audio & video) |
| 3 | Cellophane |
| 3 | Ceramic (broken plates, pots) |

I

- | | |
|---|--|
| 1 | Ice cream containers (cardboard & plastic) |
| 4 | Insecticides (HHW) |

J

- | | |
|---|---|
| 1 | Jars & jar lids |
| 1 | Juice cartons/bottles/containers (not silver lined) |

K

- | | |
|---|--------------|
| 3 | Kitty litter |
|---|--------------|

L

- | | |
|---|-------------------------------------|
| 2 | Lawn clippings |
| 4 | Light bulbs/fluorescent tubes (HHW) |
| 3 | Lolly wrappers |
| 3 | Long-life cartons |

M

- | | |
|---|--|
| 1 | Magazines |
| 3 | Manure/animal droppings |
| 4 | Mattresses |
| 3 | Meat trays (all) |
| 1 | Milk bottles and milk cartons (not silver lined) |
| 4 | Mobile phones |

N

- | | |
|---|----------------------|
| 3 | Nappies (disposable) |
| 1 | Newspapers (clean) |

O

- | | |
|-----|---------------|
| 3/4 | Oil (cooking) |
| 4 | Oil (motor) |

P

- | | |
|---|----------------------------------|
| 4 | Paint (HHW) |
| 1 | Paper bags |
| 1 | Pet food tins (rinsed) |
| 4 | Petrol & flammable liquids (HHW) |
| 1 | Pizza boxes (clean) |

3	Cigarette butts
4	Cleaning products (HHW)
3	Cling wrap
7	Clothing/shoes (good condition)
3	Clothing/shoes (damaged)
4	Cockroach bait (plastic) (HHW)
3	Coffee cups (disposable)
4	Computer components/accessories
4	Concrete (C&D)
3	Cotton wool & buds
3/7	Cutlery (metal)
3	Cutlery (plastic & wooden)

D	
4	Dirt & soil

E	
1	Egg cartons
4	Electrical appliances
1	Envelopes

F	
4	Fertiliser (HHW)
1	Food cans (rinsed)
3	Food and vegetable scraps
1	Fruit juice cartons (not silver lined)
5	Furniture (broken)
7	Furniture (fixed)

G	
2	Garden organics (small pruning)
6	Garden organics (large)
4	Gas cylinders (HHW)
1	Glass bottles & jars
3	Greaseproof paper

H	
3	Hose (short lengths)

3	Plastic bags
3/4	Plastic bottle lids
1	Plastic containers
4	Poison (liquid/solid) (HHW)
3/4	Polystyrene
3	Potato chip packets
4	Printer cartridges

R	
4	Rat poison (HHW)
3/4	Razors (disposable)
5	Rope

S	
3	Sanitary items
3	Shredded paper
3	Soft plastics
1	Steel cans (rinsed)

T	
1	Take-away plastic food containers (rinsed)
4	Timber – treated
3	Tissues
1	Toilet paper rolls (inner)
3/4	Toothbrushes
3/4	Toothpaste tubes
3/5	Toys (broken)
7	Toys (fixed)
4	Tyres

W	
2	Weeds
5	White goods
2	Wood (garden pruning)
6	Wooden planks/bits of wooden furniture
1	Wrapping paper

X	
4	X-rays

Y	
1	Yoghurt containers (rinsed)

Remove the magnet from this calendar before recycling.
Reuse or dispose of magnets in your general waste bin.



Telephone: **9285 4300**
Email: **toc@claremont.wa.gov.au**
Website: **www.claremont.wa.gov.au**



Telephone: **9384 4300**
Email: **community@wmrc.wa.gov.au**
Website: **wmrc.wa.gov.au**
Recycling Hotline: **9384 6711**

Which bin do I put it in?

Download the free Recycle Right
app from your app store.



**recycle[®]
right**

Recycle Right
recycleright.wa.gov.au
Email: **info@recycleright.wa.gov.au**

Printed on 100% recycled paper