

WASTE SORTING GUIDE

Keep me on your fridge!



PEPPERMINT GROVE

JULY 2022						
S	M	T	W	T	F	S
31					1	2
3	4	5	6	7	8	9
10	11	12	13	14	15	16
17	18	19	20	21	22	23
24	25	26	27	28	29	30

AUGUST 2022						
S	M	T	W	T	F	S
	1	2	3	4	5	6
7	8	9	10	11	12	13
14	15	16	17	18	19	20
21	22	23	24	25	26	27
28	29	30	31			

SEPTEMBER 2022						
S	M	T	W	T	F	S
				1	2	3
4	5	6	7	8	9	10
11	12	13	14	15	16	17
18	19	20	21	22	23	24
25	26	27	28	29	30	

OCTOBER 2022						
S	M	T	W	T	F	S
30	31					1
2	3	4	5	6	7	8
9	10	11	12	13	14	15
16	17	18	19	20	21	22
23	24	25	26	27	28	29

NOVEMBER 2022						
S	M	T	W	T	F	S
		1	2	3	4	5
6	7	8	9	10	11	12
13	14	15	16	17	18	19
20	21	22	23	24	25	26
27	28	29	30			

DECEMBER 2022						
S	M	T	W	T	F	S
				1	2	3
4	5	6	7	8	9	10
11	12	13	14	15	16	17
18	19	20	21	22	23	24
25	26	27	28	29	30	31

JANUARY 2023						
S	M	T	W	T	F	S
1	2	3	4	5	6	7
8	9	10	11	12	13	14
15	16	17	18	19	20	21
22	23	24	25	26	27	28
29	30	31				

FEBRUARY 2023						
S	M	T	W	T	F	S
			1	2	3	4
5	6	7	8	9	10	11
12	13	14	15	16	17	18
19	20	21	22	23	24	25
26	27	28				

MARCH 2023						
S	M	T	W	T	F	S
			1	2	3	4
5	6	7	8	9	10	11
12	13	14	15	16	17	18
19	20	21	22	23	24	25
26	27	28	29	30	31	

APRIL 2023						
S	M	T	W	T	F	S
30						1
2	3	4	5	6	7	8
9	10	11	12	13	14	15
16	17	18	19	20	21	22
23	24	25	26	27	28	29

MAY 2023						
S	M	T	W	T	F	S
	1	2	3	4	5	6
7	8	9	10	11	12	13
14	15	16	17	18	19	20
21	22	23	24	25	26	27
28	29	30	31			

JUNE 2023						
S	M	T	W	T	F	S
				1	2	3
4	5	6	7	8	9	10
11	12	13	14	15	16	17
18	19	20	21	22	23	24
25	26	27	28	29	30	

YELLOW WEEK



Recycling and General waste bin collected

GREEN WEEK



Garden Organics and General waste bin collected

Your Recycling and Garden Organics bins are collected on alternate fortnights. Your General Waste bin is collected weekly. See Yellow and Green Week dates for what bins to put out each week.

For bin collection queries, bin repairs or service changes contact the Shire of Peppermint Grove on **9286 8600**
For Verge Valet™ and recycling enquiries contact the WMRC Recycling Hotline **9384 6711** or the Verge Valet™ Collection Team on **6336 7223**



recyclerright.wa.gov.au

IN PARTNERSHIP WITH



Shire of Peppermint Grove



Western Metropolitan Regional Council



Want to reduce your waste?

The WMRC can help you trim your bin and live a low-waste life!

- ✓ **Complete a Waste Watchers Workshop**
- ✓ **Come on a Recycling Facility tour**
- ✓ **Check your knowledge with our online waste modules**
- ✓ **Follow us on socials for the latest low-waste tips and events**
- ✓ **Download our handy low-waste factsheets**
- ✓ **Volunteer with us**
- ✓ **Subscribe to our monthly newsletter at wmrc.wa.gov.au/news/newsletter/**



Containers for Change

Every eligible drink container is worth 10c. Collect your containers and take them to your local drop-off point. Keep your refund or choose to donate it to a local WA community group or charity.

All drink containers and lids returned through the scheme are recycled into new items. Lids must be separated and placed in separate collection bins on return. Find out more information at: containersforchange.com.au/wp/containers-reinvented



✓ Items we accept



Most glass, plastic, aluminium, steel and paper-based cartons between 150ml and 3L

✗ Excluded containers



Containers not commonly found in litter, including all plain milk, flavoured milks 1L and above, pure juice drinks, wine and spirit bottles, cordials.

Local return depots:

Paraquod Industries Depot

4-6 Orton Rd, Shenton Park

Fremantle Containers for Change

83 Knutsford St, Fremantle

Local bag drop:

Claremont Showgrounds

Inside Gate 8, Ashton

Crescent, Claremont 6010

For more information and other locations to return to visit: containersforchange.com.au/wa

Bin Collection Information



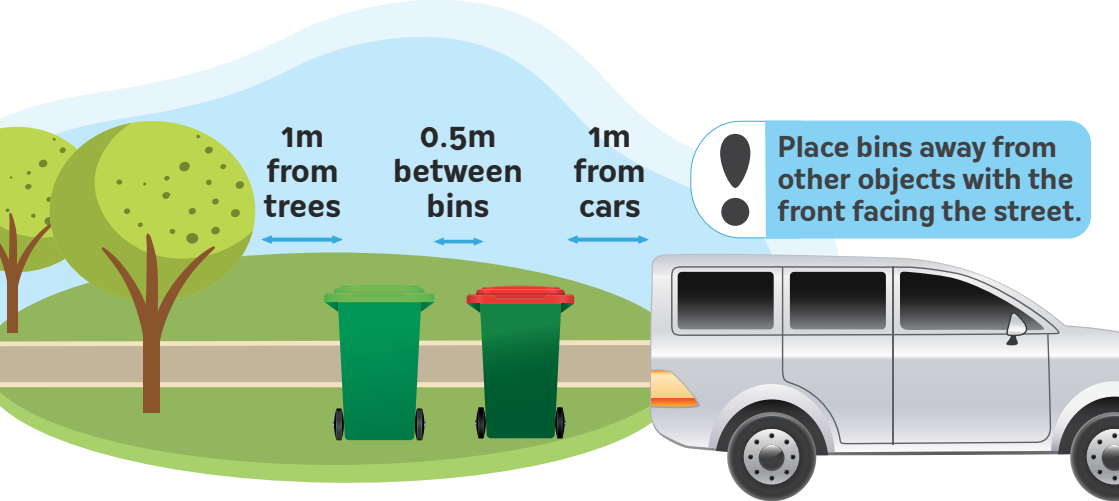
Ensure bins are placed out by 6am on collection day



Bins must weigh less than 70kg to be collected



Do not overfill your bins and ensure lids are firmly closed so items do not spill out



Recycling

Fortnightly



Garden Organics

Fortnightly



General Waste

Weekly

BIN COLLECTION INFORMATION

Which Bin Do I Put It In?

Garden Organics Bin – Collected fortnightly



Your **Garden Organics Bin** is for:

- ✓ Grass clippings
- ✓ Palm fronds
- ✓ Prunings, cuttings & trimmings
- ✓ Tree nuts
- ✓ Twigs & sticks

Your **Garden Organics Bin** is NOT for:

- ✗ Food waste
- ✗ Cardboard
- ✗ Construction & demolition waste
- ✗ Dog poo or kitty litter
- ✗ General waste
- ✗ Hazardous waste
- ✗ Plastic bags or liners
- ✗ Recyclables
- ✗ Sand or soil

These items don't belong in the GO bin:



Food waste



Cardboard



Dog poo or
kitty litter



General waste



Construction &
demolition waste



Hazardous
waste



Plastic bags or
liners



Recyclables
(plastics, glass & metals)



Sand
and soil



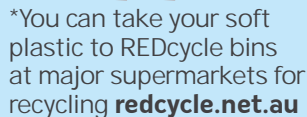
- Your **Recycling Bin** is NOT for:

- Please ensure all recycling is rinsed, empty, with all lids removed and placed loose in the bin, not in bags.**

Your **General Waste Bin** is for:

- Your **General Waste Bin** is NOT for:

- Household Hazardous Waste and E-waste CAN NOT be placed in any household bins. Drop these waste items off to the West Metro Recycling Centre free of charge or visit wmrc.wa.gov.au/recycling-disposal/west-metro-recycling-centre/accepted-items-free-for-a-fee/ for more information.



WHICH BIN DO I PUT IT IN?

Verge Valet™ Collections

Verge Valet™, as easy as 1, 2, 3...

1. Book online at **vergevalet.com.au**
2. Receive confirmation or text message reminder about your collection from Verge Valet™.
3. Place accepted items out 1 to 3 days before your collection date.

Leave the rest to us – easy as that.

Record your booked collection dates here:

Frequently Asked Questions

How do I book Verge Valet™?

Book online through the Verge Valet™ website: **vergevalet.com.au**

If you're having trouble, call the Verge Valet™ and Recycling Hotline team on 9384 6711 or the Verge Valet Collection Team, D&M on 6336 7223.

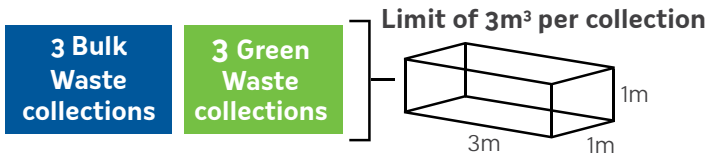
How far in advance can I book?

You can book up to 8 weeks prior or (if still available) a minimum of 4 business days before your preferred collection date. Peppermint Grove collections occur on Mondays (excluding public holidays). Verge Valet™ tip – book early to secure your preferred collection date. Remember to book your collection first before placing any waste out.

When can I place my waste out?

Waste can be placed out 1 to 3 days before your collection date. You will receive a confirmation text message 3 days before your collection. Please note, penalties may apply to waste placed out more than 3 days prior to collection.

How many collections do I get a year?



DID YOU KNOW?

You can change any of your bulk waste collections into green waste if you prefer.

What won't be accepted?

We are unable to collect asbestos, batteries, building materials, household hazardous waste, glass panels, pesticides, paint and vehicle parts. These items can be dropped off at the West Metro Recycling Centre 7 days a week – some are free and some for a fee.

How can I change, cancel or postpone my booking?

Click the 'Changes and cancellations' tab at vergevalet.com.au, or phone WMRC on 9384 6711 (Mon-Fri). Please give at least one business days' notice to avoid losing your collection allocation.

What happens to the waste collected by Verge Valet™?

Neat piles of separated waste help us recycle as much as we can. We reprocess all the green waste and recover as much recyclable material from bulk waste as possible. Mattresses and e-waste are recycled by specialists and whitegoods such as fridges are safely de-gassed before recycling.

**Verge Valet™ is intended for items that can no longer be used.
 Donate items that are too good to be thrown away.**

I live in an apartment complex, how do I get Verge Valet™?

Apartment complexes with more than 20 units must have their VergeValet™ collections organised through the strata manager, building manager or caretaker via a separate booking process found on the website. Collections can only be booked for the first Monday of the month. If you live in an apartment with 20 units or less, book your collection yourself at vergevalet.com.au.

What can I put out for a Verge Valet™ collection?

See the image below or visit vergevalet.com.au for a full list. Place items in separate piles to maximise what can be recycled. Remember, limit of 3m³ per collection.

GREEN WASTE (up to 3m ³)		BULK HOUSEHOLD WASTE (up to 3m ³)			
Garden Organics Garden waste, tree branches, twigs, weeds and flowers		General Waste Household furniture, toys, plant pots, garden hoses and general junk. Please no glass panels or surfaces	E-Waste Computers, TVs, printers, small electrical goods	White Goods Scrap metal, air conditioners, fridges, freezers, dishwashers and washing machines. Please remove doors	Mattresses
					
GAP		GAP	GAP	GAP	GAP

West Metro Recycling Centre

The West Metro Recycling Centre offers safe disposal and recycling of a range of items not suitable for kerbside collection.

FOR A FEE:



Asbestos



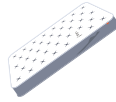
Bulk Household Waste



Construction & Demolition Waste



Greenwaste



Mattresses



Refrigerated appliances



Tyres

FOR FREE:

Household Hazardous Waste (HHW)

HHW cannot go in any household bin. HHW includes unwanted household products that contain harmful chemicals, are flammable, corrosive or explosive. Take them to the West Metro Recycling Centre free of charge. Limits of up to 20kg or 20L per material type, per person, per day.



Acids and alkalis



Aerosols and spray cans



Batteries



Engine coolants



Fire extinguishers (red only)



Flares



Gas cylinders



Household cleaners



Household light globes and fluorescent tubes



Paint



Pesticides/herbicides



Pool chemicals



Smoke detectors



Unknown chemicals



Waste motor oil



Recycling Hubs

Recycling hubs are also located in the community for collection of: batteries, light globes, mobiles and printer cartridges. Find your nearest at: wmrc.wa.gov.au/our-services/drop-off-recycling



Household batteries



Household light globes & fluorescent tubes



Mobile phones & chargers



Printer cartridges

Free Community Recycling

As a resident of a WMRC member council you can drop off domestic quantities of the following items for free. Proof of residence required.



Batteries



Bicycles



Car batteries



Cardboard



**Clothing
& shoes**



**Cooking oil
(max 20L)**



**Dental products
(eg Toothbrushes
& toothpaste)**



**Domestic
recyclables**



E-Waste



**Mobile
phones**



Petrol



**Plastic
beer clips**



**Plastic
bottle tops**



**Plastic
plant pots**



**Polystyrene
(expanded)**



**Printer
cartridges**



**Razors, blades
& packaging**



**Scrap
metal**



**Sports
goods**



**Stationery
– home or
office**



**Waste
motor oil
(max 20L)**



X-rays

FREE MULCH is available for Shire of Peppermint Grove residents from the West Metro Recycling Centre year-round. There's no limit on how much you can take. Just bring proof of residence and be ready to load it yourself.



West Metro Recycling Centre Opening Hours

Monday – Friday: 7.30am to 4.00pm

Saturday & Sunday: 8.00am to 4.00pm

Public Holidays: 7.30am to 2.00pm

(Closed Christmas Day, Good Friday & New Year's Day)

OPEN 7 DAYS TILL 4PM

wmrc.wa.gov.au

Recycling Hotline: **9384 6711**



WEST METRO RECYCLING CENTRE

Recycling & Disposal Guide: A-Z

For a more comprehensive list, visit recycleright.wa.gov.au or download the Recycle Right app through the app store.

- 1 Yellow-lidded Recycling bin items
- 2 Lime green-lidded Garden Organics bin items
- 3 Red-lidded General Waste bin items
- 4 Take to West Metro Recycling Centre
- 5 Verge Valet
- 6 REDcycle collection bin at supermarkets
- 7 Donate to charity



Hazardous household waste (HHW) can be dropped off at the West Metro Recycling Centre wmrc.wa.gov.au/our-services/drop-off-recycling

A

- 4 Acids (HHW)
- 4 Aerosol cans (HHW)
- 1 Aluminium cans
- 1 Aluminium foil (clean)
- 4 Auto Batteries

B

- 3 Band-Aids
- 3 Baskets
- 4 Batteries (HHW)
- 7 Blankets
- 4 Bleaches (HHW)
- 3 Blister packs
- 7 Books
- 1 Bottles (tops/lids off)
- 3 6 Bread bags (plastic)
- 4 Bricks (C&D)
- 1 Broken Glass
- 4 Building materials/waste (C&D)
- 4 5 Bulky items
- 1 Butter tubs (rinsed)

F

- 4 Fertiliser (HHW)
- 4 Flares (HHW)
- 1 Food cans (rinsed)
- 3 Food and vegetable scraps
- 1 Fruit juice cartons (not silver lined)
- 5 Furniture (broken)
- 7 Furniture (fixed)

G

- 4 Garden chemicals/poison (HHW)
- 2 Garden organics (small pruning)
- 5 Garden organics (large)
- 4 Gas cylinders (HHW)
- 3 6 Glad wrap (clean)
- 1 Glass bottles & jars
- 3 Greaseproof paper

H

- 3 Hose (short lengths)

I

- 1 Ice cream containers (cardboard & plastic)

P

- 1 Paper towel rolls (inner)
- 4 Pest control chemicals (HHW)
- 1 Pet food tins (rinsed)
- 4 Petrol & flammable liquids (HHW)
- 3 Picture frames (broken)
- 7 Picture frames
- 1 Pizza boxes (clean)
- 3 6 Plastic bags (empty)
- 3 4 Plastic bottle lids
- 1 Plastic containers
- 4 Poison (liquid/solid) (HHW)
- 3 Polystyrene (beads)
- 3 4 Polystyrene (expanded)
- 4 Pool chemicals (HHW)
- 3 6 Potato chip packets
- 4 Printer cartridges

R

- 4 Rat poison (HHW)
- 3 4 Razors (disposable)
- 5 Rope

C	
3	Candles & candle wax
1	Cardboard (boxes & other types)
4	Car Parts
3	Cassette tapes (audio & video)
3	CDs & CD cases (damaged)
3/6	Cellophane
3	Ceramic (broken plates, pots)
3	Cigarette butts
4	Cleaning products (HHW)
7	Clothing/shoes (good condition)
3	Clothing/shoes (damaged)
4	Cockroach bait (plastic) (HHW)
3	Coffee cups (disposable)
3	Coffee pods
4	Computer components/accessories
4	Concrete (C&D)
3	Cork
3	Cotton wool & buds
3/7	Cutlery (metal)
3	Cutlery (plastic & wooden)
D	
3	DVDs & DVD cases (damaged)
4	Dirt & soil
E	
1	Egg cartons
4/5	Electrical appliances
1	Envelopes

4	Insecticides (HHW)
J	
1	Jars & jar lids
1	Juice cartons/bottles/containers (not silver lined)
K	
3	Kitty litter
L	
2	Lawn clippings
4	Light bulbs/fluorescent tubes (HHW)
3/6	Lolly wrappers
3	Long-life cartons
M	
1	Magazines
3	Manure/animal droppings
4/5	Mattresses
3	Meat trays (all)
1	Metal lids
1	Milk bottles and milk cartons (not silver lined)
4	Mobile phones
N	
3	Nappies (disposable)
1	Newspapers (clean)
O	
3/4	Oil (cooking)
4	Oil (motor)
P	
4	Paint tins (empty)
4	Paint (HHW)
1	Paper bags

S	
3	Sanitary pads
3	Shredded paper
3/6	Soft plastics
1	Steel cans (rinsed)
T	
1	Take-away plastic food containers (rinsed)
3	Tampons
4	Timber – treated
3	Tissues
1	Toilet paper rolls (inner)
3/4	Toothbrushes
3/4	Toothpaste tubes
3/5	Toys (broken)
7	Toys (good condition)
4	Tyres
V	
3	Vacuum cleaner dust
W	
2	Weeds
4/5	White goods
2	Wood (garden pruning)
4/5	Wooden planks/bits of wooden furniture
1	Wrapping paper
X	
4	X-rays
Y	
1	Yoghurt containers (rinsed)
(HHW) = Hazardous Household Waste	
(C&D) = Construction & Demolition	

Reuse or dispose of magnets in your general waste bin.
Remove both magnets from this calendar before recycling.



Shire of
Peppermint Grove

Telephone: 9286 8600

Email: admin@peppermintgrove.wa.gov.au

Website: www.peppermintgrove.wa.gov.au



wmrc.wa.gov.au

Verge Valet™: vergevalet.com.au

Verge Valet™ & Recycling Hotline: 9384 6711

Verge Valet™ Collection team: 6336 7223

Which bin do I put it in?

Visit **recycleright.wa.gov.au**, or download the
free Recycle Right app from your app store.



Recycle Right

recycleright.wa.gov.au

Email: info@recycleright.wa.gov.au

Printed on 100% recycled paper