

WASTE & RECYCLING GUIDE TOWN OF CLAREMONT

JULY 2022						
S	M	T	W	T	F	S
31					1	2
3	4	5	6	7	8	9
10	11	12	13	14	15	16
17	18	19	20	21	22	23
24	25	26	27	28	29	30

AUGUST 2022						
S	M	T	W	T	F	S
	1	2	3	4	5	6
7	8	9	10	11	12	13
14	15	16	17	18	19	20
21	22	23	24	25	26	27
28	29	30	31			

SEPTEMBER 2022						
S	M	T	W	T	F	S
			1	2	3	
4	5	6	7	8	9	10
11	12	13	14	15	16	17
18	19	20	21	22	23	24
25	26	27	28	29	30	

OCTOBER 2022						
S	M	T	W	T	F	S
30	31					1
2	3	4	5	6	7	8
9	10	11	12	13	14	15
16	17	18	19	20	21	22
23	24	25	26	27	28	29

NOVEMBER 2022						
S	M	T	W	T	F	S
		1	2	3	4	5
6	7	8	9	10	11	12
13	14	15	16	17	18	19
20	21	22	23	24	25	26
27	28	29	30			

DECEMBER 2022						
S	M	T	W	T	F	S
			1	2	3	
4	5	6	7	8	9	10
11	12	13	14	15	16	17
18	19	20	21	22	23	24
25	26	27	28	29	30	31

JANUARY 2023						
S	M	T	W	T	F	S
1	2	3	4	5	6	7
8	9	10	11	12	13	14
15	16	17	18	19	20	21
22	23	24	25	26	27	28
29	30	31				

FEBRUARY 2023						
S	M	T	W	T	F	S
			1	2	3	4
5	6	7	8	9	10	11
12	13	14	15	16	17	18
19	20	21	22	23	24	25
26	27	28				

MARCH 2023						
S	M	T	W	T	F	S
			1	2	3	4
5	6	7	8	9	10	11
12	13	14	15	16	17	18
19	20	21	22	23	24	25
26	27	28	29	30	31	

APRIL 2023						
S	M	T	W	T	F	S
30						1
2	3	4	5	6	7	8
9	10	11	12	13	14	15
16	17	18	19	20	21	22
23	24	25	26	27	28	29

MAY 2023						
S	M	T	W	T	F	S
	1	2	3	4	5	6
7	8	9	10	11	12	13
14	15	16	17	18	19	20
21	22	23	24	25	26	27
28	29	30	31			

JUNE 2023						
S	M	T	W	T	F	S
				1	2	3
4	5	6	7	8	9	10
11	12	13	14	15	16	17
18	19	20	21	22	23	24
25	26	27	28	29	30	

 No waste collection on Good Friday. Bins will be collected Saturday 8 April 2023

YELLOW WEEK



**Recycling and
General waste**
bins collected

GREEN WEEK



**Garden Organics
and General waste**
bins collected

See Yellow and Green Week dates and Zone Map on page 3
for what bins to put out on your designated collection day.

BULK WASTE PASS CLAREMONT RESIDENTS

 West Metro Recycling Centre



**Valid to
31 July 2023**

Further information overleaf

GREEN WASTE PASS CLAREMONT RESIDENTS

 West Metro Recycling Centre



**Valid to
31 July 2023**

Further information overleaf

BULK WASTE PASS

CLAREMONT RESIDENTS

 West Metro Recycling Centre

VALID FOR ONE CUBIC METRE

For more information visit:
wmrc.wa.gov.au

GREEN WASTE PASS

CLAREMONT RESIDENTS

 West Metro Recycling Centre

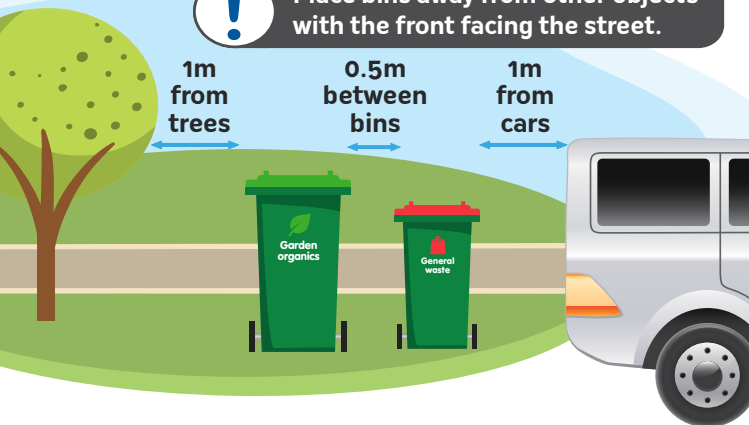
VALID FOR ONE CUBIC METRE

For more information visit:
wmrc.wa.gov.au

Bin Collection Information



Place bins away from other objects
with the front facing the street.



Ensure bins
are placed out
by 6.00am on
collection day



Bins must
weigh less
than 70kg to
be collected

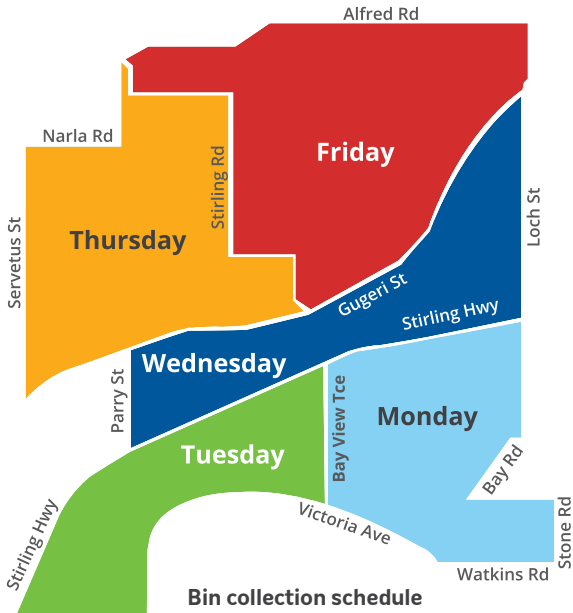


Do not overfill your
bins and ensure lids
are firmly closed so
items do not spill out

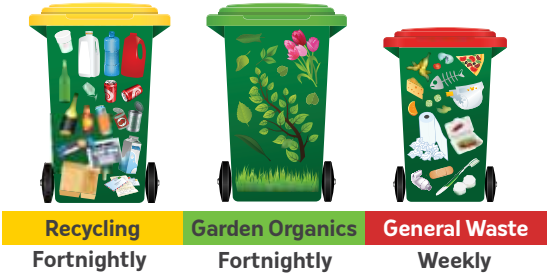
Contact	Waste Query	Phone number
Suez	Missed bin collection enquiries	1300 633 633
Claremont	Report a damaged bin Request a change to your bin services	9285 4300 or toc@claremont.wa.gov.au
WMRC	General waste and recycling enquiries	08 9384 6711

Bin Collection Day

Please see front calendar for your yellow and green week dates and refer to the zone map below for what day of the week your bins will be collected.



Bin collection schedule



Which Bin Do I Put It In?

Garden Organics – Collected fortnightly



Your **Garden Organics Bin** is for:

- ✓ Grass clippings
- ✓ Palm fronds
- ✓ Prunings, cuttings & trimmings
- ✓ Tree nuts
- ✓ Twigs & sticks

Your **Garden Organics Bin** is NOT for:

- ✗ Food waste
- ✗ Cardboard
- ✗ Construction & demolition waste
- ✗ Dog poo or kitty litter
- ✗ General waste
- ✗ Hazardous waste
- ✗ Plastic bags or liners
- ✗ Recyclables
- ✗ Sand & soil

These items don't belong in the GO bin:



NO food waste



NO cardboard



NO dog poo or kitty litter



NO general waste



NO construction & demolition waste



NO hazardous waste



NO plastic bags or liners



NO recyclables (plastics, glass & metals)

Recycling Bin – Collected fortnightly



360L recycling bins available on request (FEES APPLY)

Your **Recycling Bin** is for:

- ✓ Clean paper & cardboard
- ✓ Glass bottles & jars
- ✓ Plastic bottles & containers
- ✓ Steel & aluminium cans

Your **Recycling Bin** is NOT for:

- ✗ Recycling in bags
- ✗ Soft plastics*
- ✗ Aerosols
- ✗ Batteries or E-Waste
- ✗ Meat trays
- ✗ Nappies
- ✗ Textiles



Please ensure all recycling is rinsed, empty, with all lids removed and placed loose in the bin, not in bags.

General Waste Bin – Collected weekly



Your **General Waste Bin** is for:

- ✓ Dog poo & kitty litter
- ✓ Food waste
- ✓ General rubbish items
- ✓ Hygiene products
- ✓ Nappies
- ✓ Polystyrene
- ✓ Plastic bags
- ✓ Soft plastic*

Your **General Waste Bin** is NOT for:

- ✗ Clean recyclables
- ✗ Hazardous waste

*See Soft Plastics information section of this guide.

Household Hazardous Waste and E-waste CAN NOT go in any household bins. Drop these waste items off to the West Metro Recycling Centre free of charge or visit wmrc.wa.gov.au/recycling-disposal/west-metro-recycling-centre/accepted-items-free-for-a-fee/ for more information.

WHICH BIN DO I PUT IT IN?

Soft Plastics

Soft 'scrunchable' plastics are plastic bags and food packaging that can be scrunched into a ball and expand immediately – think chip packets, chocolate wrappers and cereal bags. These can't be recycled in your recycling bin because they are too lightweight and get mixed up with the paper stream. Collect your soft plastics separately and drop them into a REDcycle bin at the front of your local supermarket. For more information about what is considered a soft plastic, visit **www.redcycle.net.au**

REDcycle also accepts:

- Bubble wrap
- Cellophane from bunches of flowers
- Chip and cracker packets (silver lined)
- Confectionery and pasta bags
- Netting produce bags (metal clips removed)
- Pet food pouches and bags
- Plastic Australia Post satchels
- Potting mix and compost bags
- Squeeze pouches with lid on (e.g. yoghurt/baby food)



Please make sure your soft plastics are EMPTY and DRY for REDcycle recycling

How to Sort Your Waste Flyers are available in a range of languages. View them online and download a copy at recycleright.wa.gov.au/information-flyers/



Containers for Change



Whether you're keen to earn a bit of extra cash, raise money for your local sports club or event, or donate to your favourite charity, you can earn or donate 10 cents for every eligible drink container collected.

All drink containers and lids returned through the scheme are recycled into new items. Lids must be separated and placed in separate collection bins on return. Find out more information at: **containersforchange.com.au/wa/containers-reinvented**

What's in? **Most aluminium, glass, plastic, steel and liquid paper board beverage containers between 150mL and 3 litres.** All lids must be removed from containers.

Local return depots:

Paraquad Industries Depot

4-6 Orton Rd, Shenton Park

Fremantle Containers for Change

83 Knutsford St, Fremantle

For more information and other locations to return to visit:

containersforchange.com.au/wa

Remember to rinse and take the lids off!



ELIGIBLE CONTAINERS



Most glass, plastic, aluminium, steel and paper-based cartons between 150mL and 3L



INELIGIBLE CONTAINERS

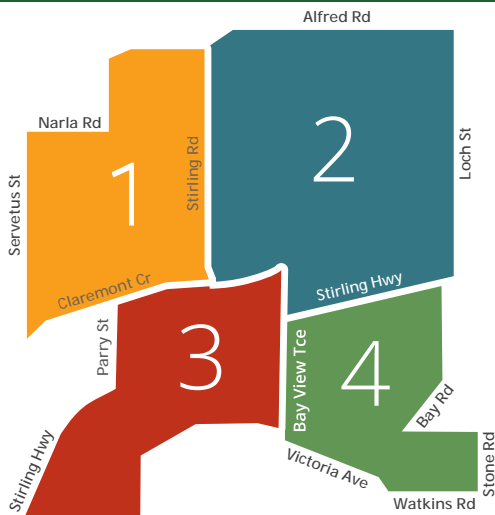


Containers not commonly found in litter, including all plain milk, flavoured milks 1L and above, pure juice drinks, wine and spirit bottles, cordials.

SOFT PLASTICS

CONTAINERS FOR CHANGE

Green Waste & Bulk Waste Collection



! Bulk and Green Waste need to be placed on the verge on the weekend before your zone's scheduled collection date.



Bulk Waste Only



Green Waste Only

AREA 1 Removed week beginning:

25 Jul 2022

3 Oct 2022

28 Nov 2022

23 Jan 2023

27 Mar 2023

AREA 2 Removed week beginning:

1 Aug 2022

10 Oct 2022

5 Dec 2022

30 Jan 2023

3 Apr 2023

AREA 3 Removed week beginning:

8 Aug 2022

17 Oct 2022

12 Dec 2022

6 Feb 2023

10 Apr 2023

AREA 4 Removed week beginning:

15 Aug 2022

24 Oct 2022

12 Dec 2022

13 Feb 2023

17 Apr 2023

Bulk waste is collected by multiple trucks. It's important that you **DO NOT** place out additional waste once part of your waste has been collected as the truck that collects that type of waste has already been.

GREEN WASTE COLLECTIONS

Up to one cubic metre of the following items **WILL** be collected:

- ✓ Bag leaves and small vegetation
- ✓ Garden organics – branches, cuttings and leaves
(Max length 1.5 metres & max diameter 150mm)



Green Waste bags – for small cuttings can be purchased from the Town's Administration building for \$5.50 each

The following Items **WILL NOT** be collected:

- ✗ Branches over 1.5 metres in length
- ✗ Branches over 200mm in diameter
- ✗ Bulk or household waste
- ✗ Leaves in plastic bags
- ✗ Large tree trunks or stumps

BULK WASTE COLLECTIONS

The following items **WILL** be collected:

- ✓ General junk. Items longer than 1.2 meters in length need to be dismantled e.g. swing-sets, playgrounds, trampolines
- ✓ Old furniture
- ✓ Refrigerators (doors removed) & other white goods
- ✓ Stoves (doors removed)



The following items **WILL NOT** be collected:

- | | |
|---|--|
| ✗ Asbestos & cement product* | ✗ Foodstuffs
(household food waste) |
| ✗ Bricks, tiles, concrete, sand & rubble* | ✗ Gas bottles** |
| ✗ Building materials & timber* | ✗ Green waste * |
| ✗ Car batteries ** | ✗ Mattresses * |
| ✗ Electronics such as computers, TVs & printers** | ✗ Motor vehicles
(whole or parts)* |
| ✗ Flammable liquids & oil ** | ✗ Paint & chemicals** |

Items above can be dropped at the West Metro Recycling Centre.
Items with a * for a fee and items with ** free of charge (with proof of residency).

West Metro Recycling Centre

The West Metro Recycling Centre offers safe disposal and recycling of a range of items not suitable for kerbside collection.

FOR A FEE:



Asbestos



Bulk Household Waste



Construction & Demolition Waste



Greenwaste



Mattresses



Refrigerated appliance



Tyres

FREE:

Household Hazardous Waste (HHW)

HHW can not go in any household bin. HHW includes unwanted household products that contain harmful chemicals, are flammable, corrosive or explosive. Take them to the West Metro Recycling Centre free of charge. Limits of up to 20kg or 20L per material type, per person, per day.



Acids and alkalis



Aerosols and spray cans



Batteries



Engine coolants



Fire extinguishers (red only)



Flares



Gas cylinders



Household cleaners



Household light globes and fluorescent tubes



Paint



Pesticides/herbicides



Pool chemicals



Smoke detectors



Unknown chemicals



Waste motor oil



Recycling Hubs

Recycling hubs are also located in the community for collection of: batteries, light globes, mobiles and printer cartridges. Find your nearest at: wmrc.wa.gov.au/recycling-disposal/drop-off-recycling/ or go to:

Claremont Aquatic Centre (batteries, globes and cartridges), 12 Davies Road, Claremont 9285 4343

Number One Claremont (batteries only), 308 Stirling Highway, Claremont 9285 4300



Household batteries



Household light globes & fluorescent tubes



Mobile phones & chargers



Printer cartridges



Western Metropolitan Regional Council
Managing waste wisely

Free Community Recycling

As a resident of a WMRC member council you can drop off domestic quantities of the following items for free. Proof of residence required.



Batteries



Bicycles



Car batteries



Cardboard



Clothing & shoes



Cooking oil (max 20L)



Dental products



Domestic recyclables



E-Waste



Mobile phones



Petrol



Plastic plant pots



Polystyrene



Plastic beer clips



Plastic bottle tops



Printer cartridges



Razors, blades & packaging



Scrap metal



Sports goods



Stationery – home or office



Waste motor oil (max 20L)



X-rays

FREE MULCH is available for Town of Claremont residents from the West Metro Recycling Centre year-round. No limit on how much you can take, just bring proof of residence and be ready to load it yourself.



West Metro Recycling Centre Opening Hours

OPEN 7 DAYS TILL 4PM

Monday – Friday: 7.30am to 4.00pm

Saturday & Sunday: 8.00am to 4.00pm

Public Holidays: 7.30am to 2.00pm

(Closed Christmas Day, Good Friday & New Year's Day)

wmrc.wa.gov.au

Recycling Hotline: **9384 6711**



How To Be A GREAT Sort

Sort first and treat your general waste bin as a last resort.

G = GIFT

Gift items to charity, swap or sell.

R = RECYCLE

Recycle these 5 in your yellow lidded bin – paper, cans, cardboard, plastic and glass - rinsed, loose, lids off.



E = EARTHCYCLE

Compost food scraps and garden waste. Worm Farming and Composting Factsheets available at **wmrc.wa.gov.au**

A = AVOID

Avoid single use items, excess packaging and waste. Find out how at WMRC Waste Watchers Workshops: **wmrc.wa.gov.au**

T = TAKE

Take hazardous and E-waste items to drop-off points. The West Metro Recycling Centre is a registered drop off point for the Household Hazardous Waste Program.



WasteSorted

A Waste Authority Program

Visit **wastesorted.wa.gov.au** for more information about being a GREAT sort.

Reuse and Repair

If it's too good to throw away, gift, swap, sell or fix it.

Buy Nothing	Post anything on Facebook for free
Charities	Donate clothing, bric-a-brac & furniture
Dismantle	Donate bikes
FairGame	Donate sporting equipment
Garage Sale Trail	Register to hold a garage sale
GiveWrite	Donate new/lightly used stationery
Givit	Match item to recipient
Gumtree	Sell or free-list any item
Hello Initiative	Donate mobile phones
Repair Labs/Cafés	Learn to fix broken items

Furniture Home Collection Services

If your household furniture is in good, clean condition, you can donate it to charity. See the pick up services below:

Organisation	Phone
Anglicare Home Collection Service	6253 3535
Good Sammy Home Collection	1300 466 372
Paraquad Industries	9381 0189
People Who Care	9379 1944
Salvation Army Home Collection Service	13 72 58
St Vincent de Paul Society	6323 7520

Want to reduce your waste?

The WMRC can help you trim your bin and live a low-waste life!

- ✓ **Do a Waste Watchers Workshop**
- ✓ **Come on a Recycling Facility tour**
- ✓ **Check your knowledge with our online waste modules**
- ✓ **Follow us on socials for the latest low-waste tips and events**
- ✓ **Download our handy low-waste factsheets**
- ✓ **Volunteer with us**
- ✓ **Subscribe to our monthly newsletter**

Find out more at
wmrc.wa.gov.au



**Western
Metropolitan**
Regional Council

Recycling & Disposal Guide: A-Z

For a more comprehensive list visit recycleright.wa.gov.au or download the Recycle Right app through the app store.

- | | |
|---|---|
| 1 | Yellow-lidded Recycling bin items |
| 2 | Lime green-lidded Garden Organics bin items |
| 3 | Red-lidded General Waste bin items |
| 4 | Take to West Metro Recycling Centre |
| 5 | Bulk Waste Collections |
| 6 | Green Waste Collections |
| 7 | REDcycle collection bin at supermarkets |
| 8 | Donate to charity |

A

- | | |
|---|------------------------|
| 4 | Acids (HHW) |
| 4 | Aerosol cans (HHW) |
| 1 | Aluminium cans |
| 1 | Aluminium foil (clean) |

B

- | | |
|-----|--------------------------------|
| 4 | Batteries (HHW) |
| 8 | Blankets |
| 4 | Bleaches (HHW) |
| 3 | Blister packs |
| 1 | Bottles (tops/lids off) |
| 3/7 | Bread bags (plastic) |
| 4 | Bricks (C&D) |
| 1 | Broken Glass |
| 4 | Building materials/waste (C&D) |
| 4/5 | Bulky items |
| 1 | Butter tubs (rinsed) |

C

- | | |
|-----|---------------------------------|
| 1 | Cardboard (boxes & other types) |
| 3 | Cassette tapes (audio & video) |
| 3/7 | Cellophane |
| 3 | Ceramic (broken plates, pots) |

I

- | | |
|---|--|
| 1 | Ice cream containers (cardboard & plastic) |
| 4 | Insecticides (HHW) |

J

- | | |
|---|---|
| 1 | Jars & jar lids |
| 1 | Juice cartons/bottles/containers (not silver lined) |

K

- | | |
|---|--------------|
| 3 | Kitty litter |
|---|--------------|

L

- | | |
|-----|-------------------------------------|
| 2 | Lawn clippings |
| 4 | Light bulbs/fluorescent tubes (HHW) |
| 3/7 | Lolly wrappers |
| 3 | Long-life cartons |

M

- | | |
|---|--|
| 1 | Magazines |
| 3 | Manure/animal droppings |
| 4 | Mattresses |
| 3 | Meat trays (all) |
| 1 | Milk bottles and milk cartons (not silver lined) |
| 4 | Mobile phones |

N

- | | |
|---|----------------------|
| 3 | Nappies (disposable) |
| 1 | Newspapers (clean) |

O

- | | |
|-----|---------------|
| 3/4 | Oil (cooking) |
| 4 | Oil (motor) |

P

- | | |
|---|----------------------------------|
| 4 | Paint (HHW) |
| 1 | Paper bags |
| 1 | Pet food tins (rinsed) |
| 4 | Petrol & flammable liquids (HHW) |
| 1 | Pizza boxes (clean) |

3	Cigarette butts
4	Cleaning products (HHW)
8	Clothing/shoes (good condition)
3	Clothing/shoes (damaged)
4	Cockroach bait (plastic) (HHW)
3	Coffee cups (disposable)
4	Computer components/accessories
4	Concrete (C&D)
3	Cotton wool & buds
3/8	Cutlery (metal)
3	Cutlery (plastic & wooden)

D	
4	Dirt & soil

E	
1	Egg cartons
4	Electrical appliances
1	Envelopes

F	
4	Fertiliser (HHW)
1	Food cans (rinsed)
3	Food and vegetable scraps
1	Fruit juice cartons (not silver lined)
5	Furniture (broken)
8	Furniture (fixed)

G	
2	Garden organics (small pruning)
6	Garden organics (large)
4	Gas cylinders (HHW)
3/7	Glad wrap
1	Glass bottles & jars
3	Greaseproof paper

H	
3	Hose (short lengths)

3/7	Plastic bags (empty)
3/4	Plastic bottle lids
1	Plastic containers
4	Poison (liquid/solid) (HHW)
3/4	Polystyrene
3/7	Potato chip packets
4	Printer cartridges

R	
4	Rat poison (HHW)
3/4	Razors (disposable)
5	Rope

S	
3	Sanitary items
3	Shredded paper
3/7	Soft plastics
1	Steel cans (rinsed)

T	
1	Take-away plastic food containers (rinsed)
4	Timber – treated
3	Tissues
1	Toilet paper rolls (inner)
3/4	Toothbrushes
3/4	Toothpaste tubes
3/5	Toys (broken)
8	Toys (fixed)
4	Tyres

W	
2	Weeds
5	White goods
2	Wood (garden pruning)
6	Wooden planks/bits of wooden furniture
1	Wrapping paper

X	
4	X-rays

Y	
1	Yoghurt containers (rinsed)

Reuse or dispose of magnets in your general waste bin.
Remove this magnet from this calendar before recycling.



Telephone: **9285 4300**

Email: **toc@claremont.wa.gov.au**

Website: **www.claremont.wa.gov.au**



Telephone: **9384 4300**

Email: **community@wmrc.wa.gov.au**

Website: **wmrc.wa.gov.au**

Recycling Hotline: **9384 6711**

Which bin do I put it in?

Download the free Recycle Right
app from your app store.



**recycle[®]
right**

Recycle Right

recycleright.wa.gov.au

Email: **info@recycleright.wa.gov.au**

Printed on 100% recycled paper